

The Augusta I

Two Story Home



Standard Elevation



Optional Elevations

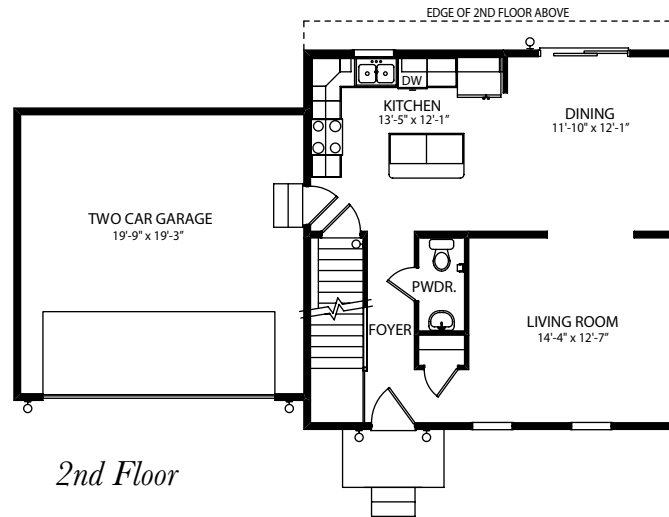


www.jamyershomes.com

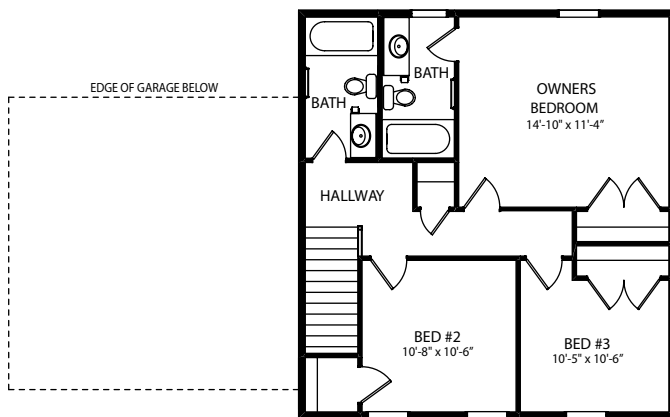
The Builder Of *Choices*

The Augusta I

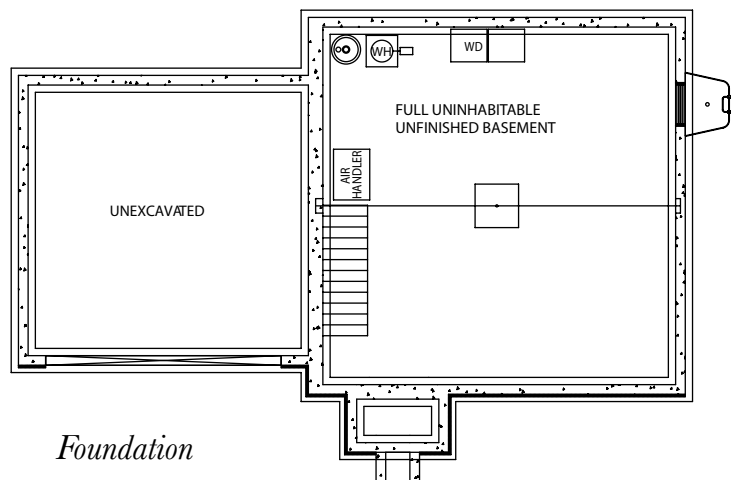
1,352 Sq. Ft. Living Space



2nd Floor



1st Floor



Foundation



www.jamyershomes.com

160 Ram Drive, Hanover, PA, 17331 | 717.632.9406 | 1.800.368.9990

Details and dimensions on floor plans are approximate and subject to change. Appearance of actual house may vary from model photographs shown.

