

# Evelyn



16 Partridge Court, Gettysburg, PA 17325

Homesite

**C55**

 **Ready Now**

MLS #

School District

Gettysburg Area School District

County

Adams County

**\$384,900**

HOME STYLE  
**One Story**

SF	BEDS	BATHS
1984	3	2

## Home Features

- 9 Foot Ceilings Throughout Main Level
- 1st Floor Primary Bedroom
- Upgraded Siding Color
- Stone Front At Bedroom #3 with Gable
- Medal Pent Roof At Garage & Bedroom #2
- Painted Kitchen Cabinetry with Crown Molding
- Granite Kitchen Countertops
- Stainless Steel Appliances
- Kitchen Island
- Laminate Plank Flooring in Foyer, Hall to Bedrooms, Great Room, Dining Room, Kitchen & Laundry Room
- Upgraded Carpeting & Padding in All Bedrooms
- Two Walk-in Closets in Primary Bedroom
- Gas Heat



Sales Manager

**Mitch Kemp**

717.476.6600

[mkemp@jamyershomes.com](mailto:mkemp@jamyershomes.com)

**Model Hours**

Mon to Sun: 10am to 5pm

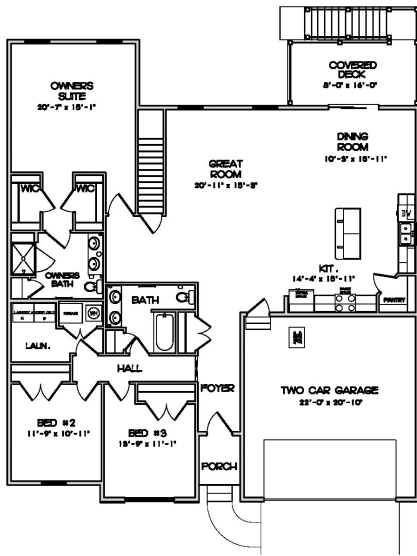
Toll Free: 1.800.368.9990 | Local: 717.632.9406 | [jamyershomes.com](http://jamyershomes.com)



\*We are pledged to the letter and spirit of U.S. policy for the achievement of equal housing opportunity throughout the Nation. We encourage and support affirmative advertising and marketing programs in which there are no barriers to obtaining housing because of race, color, religion, sex, handicap, familial status, or national origin.



# Evelyn Floor Plans



FIRST FLOOR PLAN (S&D) 1/2" = 1'-0" SECOND FLOOR PLAN (S&D) 1/2" = 1'-0" THIRD FLOOR PLAN (S&D) 1/2" = 1'-0"

G:\1dmg\Subdivisions\Cumberland Village at Marsh Creek\A6 Evelyn



Want to purchase this home?  
**(717) 632.9406**

Scan to View  
*Home Listing*

