

Delray II - A Lot 180



3614 Fieldstone Dr, Dover, PA 17315

Homesite

180

 **Less than 30 Days**

MLS #

PAYK2076950

School District

DOVER AREA

County

YORK

HOME STYLE

Two Story, Duplex

SF	BEDS	BATHS
1400	3	2.5

\$285,480

Home Features

- 9' First Floor Ceilings
- LVP Flooring on entire main level
- 36" Espresso Stained Kitchen Cabinetry w/ Crown Molding
- Granite Countertops
- Kitchen Island & Pantry
- Laundry on Second Floor
- Full Unfinished Basement
- One Car Garage w/ Interior Access



Sales Manager

Stephanie Wilson

717.634.9092

swilson@jamyershomes.com

Model Hours

Thurs to Mon: 10am to 5pm

Toll Free: 1.800.368.9990 | Local: 717.632.9406 | jamyershomes.com

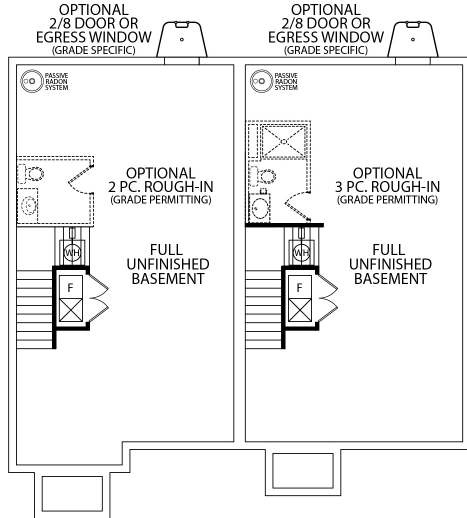


*We are pledged to the letter and spirit of U.S. policy for the achievement of equal housing opportunity throughout the Nation. We encourage and support affirmative advertising and marketing programs in which there are no barriers to obtaining housing because of race, color, religion, sex, handicap, familial status, or national origin.

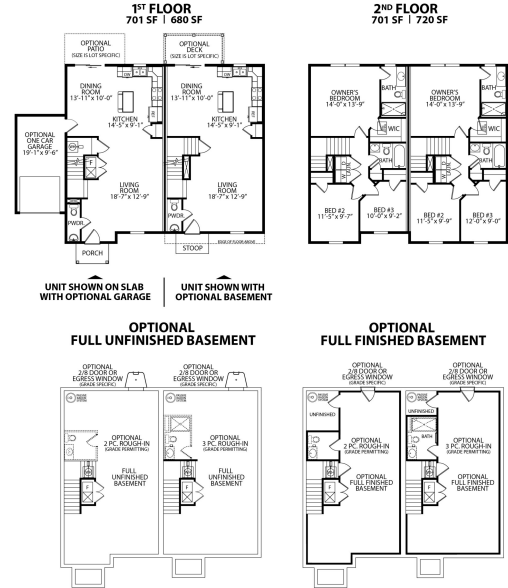


Delray II - A Lot 180 Floor Plans

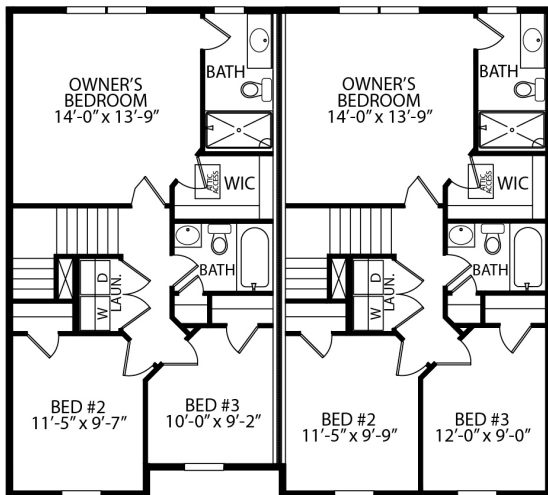
OPTIONAL FULL UNFINISHED BASEMENT



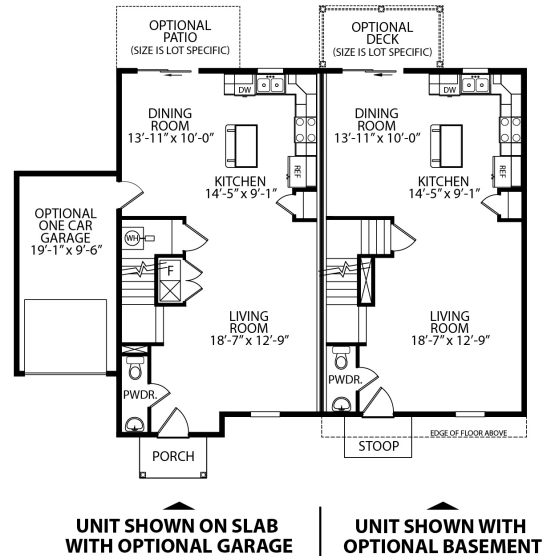
DELRAY 2



2ND FLOOR 701 SF | 720 SF



1ST FLOOR 701 SF | 680 SF



Want to purchase this home?
(717) 632.9406

Scan to View
Home Listing

