

Sedona - Lot 31



2604 Village Rd, Dover, PA 17315

Homesite

31

 **Under Construction**

MLS #

PAYK2073768

School District

DOVER AREA

County

YORK

HOME STYLE
Two Story

SF

2095

BEDS

4

BATHS

2.5

\$389,900

Home Features

- 4 Bedrooms, 2.5 Bath
- Open Concept Floor Plan
- 2 Car Garage
- Basement - Unfinished
- Kitchen Island



Sales Manager

Stephanie Wilson

717.634.9092

swilson@jamyershomes.com

Model Hours

Thurs to Mon: 10am to 5pm

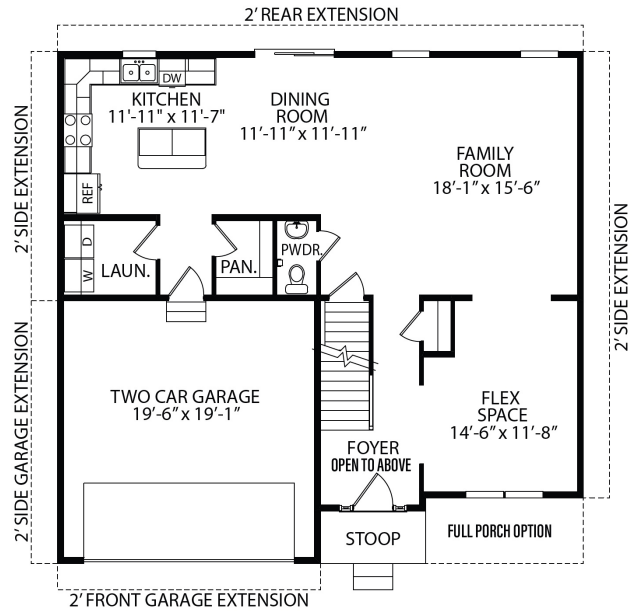
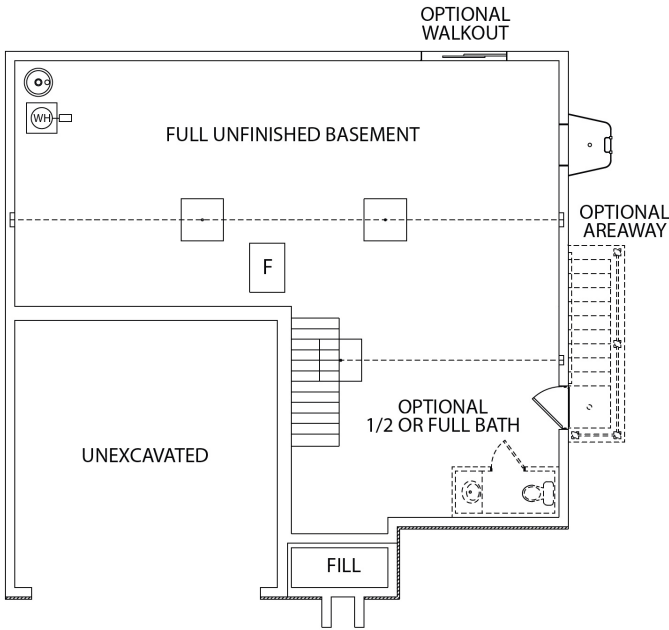
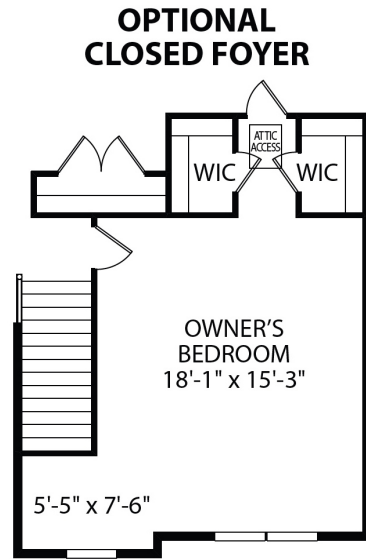
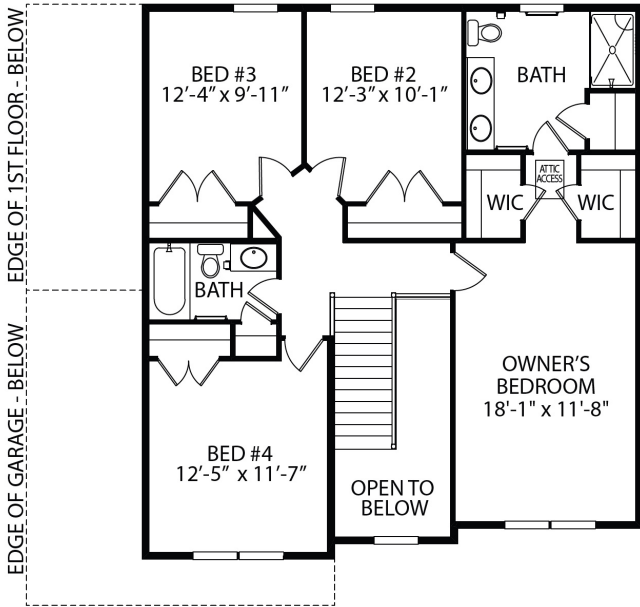
Toll Free: 1.800.368.9990 | Local: 717.632.9406 | jamyershomes.com



*We are pledged to the letter and spirit of U.S. policy for the achievement of equal housing opportunity throughout the Nation. We encourage and support affirmative advertising and marketing programs in which there are no barriers to obtaining housing because of race, color, religion, sex, handicap, familial status, or national origin.



Sedona - Lot 31 Floor Plans



Want to purchase this home?
(717) 632.9406

Scan to View
Home Listing

