

# *Congressional*



*Not actual home*

## *Congressional*

**Homesite 5**

### *Features Include:*

**\$575,000**

- 2 ft. rear extension entire first floor
- 3 car garage
- Fireplace
- Hardwood throughout first floor
- Kitchen tile back splash
- Large deck off rear of the home

***Morgan Run • 579 Enquine Dr., Westminster, MD***



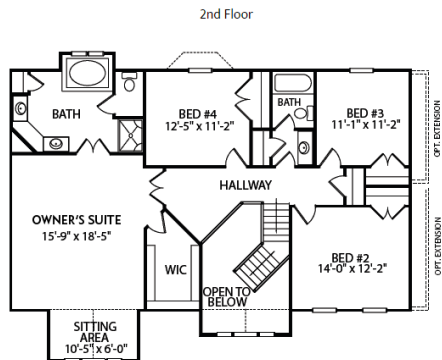
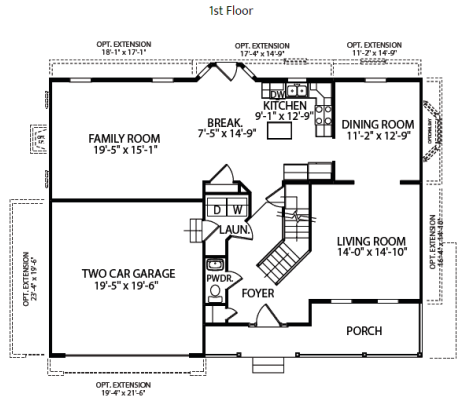
**Call Kevin Sasada 717.688.0971**  
**[ksasada@jamyershomes.com](mailto:ksasada@jamyershomes.com)**

160 Ram Drive, Hanover, PA 17331 • 1.800.368.9990 • [jamyershomes.com](http://jamyershomes.com)

\*We are pledged to the letter and spirit of U.S. policy for the achievement of equal housing opportunity throughout the Nation. We encourage and support an affirmative advertising and marketing program in which there are no barriers to obtaining housing because of race, color, religion, sex, handicap, familial status, or national origin.



### 2,540 Sq. Ft. Living Space



Call Kevin Sasada 717.688.0971

160 Ram Drive, Hanover, PA 17331 • 1.800.368.9990 • [jamyershomes.com](http://jamyershomes.com)

\*We are pledged to the letter and spirit of U.S. policy for the achievement of equal housing opportunity throughout the Nation. We encourage and support an affirmative advertising and marketing program in which there are no barriers to obtaining housing because of race, color, religion, sex, handicap, familial status, or national origin.



